

THE WALNUT TREE COMPANY

www.WalnutTrees.co.uk

Suppliers of quality walnut trees and reliable advice for forest, orchard, garden and amenity plantings

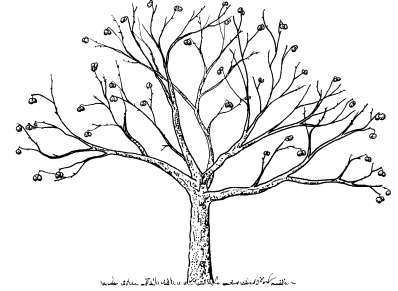
Walnut plant list 2009/10

FRUIT VARIETIES: all supplied as two-year-old grafted plants and bare rooted.

Standard varieties

Fruit varieties: all supplied as two-year-old grafted, bare-rooted plants

Fernette: New French variety with the same parentage and similar characteristics as Fernor (Franquette x Lara) below. Produces very good quality, large, globular nuts. A suitable pollinator for Fernor along with Ronde de Montignac.



Fernor: Excellent new French variety, late leafing, precocious flowering, lateral fruiting and blight tolerant. Late ripening, large fruit of excellent quality; light coloured, easily extracted kernels which store well and have excellent flavour. In France, yields of 1 tonne per hectare at 6-years-old and 4-5 tonnes per hectare when mature are typical. Average vigour and semi erect habit. Suitable for hedgerow systems (4m x 8m).

Franquette: Traditional French variety, late leafing, good productivity, excellent nut quality, terminal bearer (1- 2 nuts per terminal), requires little pruning, yields only fair compared to modern lateral bearing varieties such as Fernor and Lara. Partly self- fertile, bearing fruit at 3- 5 years. Late fruiting season, nut size mid to large and well sealed. Resistance to blight and codling moth.

Lara: French variety, good fruit quality, precocious and highly productivity. Early budbreak and fruit ripening. Average vigour, quite upright in habit and lateral bearing make it suitable for hedgerow systems (4m x 8m). Blight sensitive in wet years.

Ronde de Montignac: An old French variety, late to leaf out and an excellent pollinator for Fernor, Franquette and Lara. Quite vigorous growth, semi erect habit, light cropper producing small/medium sized nuts with high quality kernels.

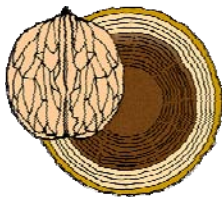
NB. Fruit varieties have performed well in continental Europe – no data are available for UK performance.

The Walnut Tree Company Ltd. West Cottage, Flimwell, Wadhurst, Sussex TN5 7PX UK.

Tel: ++44 (0)1892 890376

 contactus@WalnutTrees.co.uk ~ Website: www.WalnutTrees.co.uk

Company No. 4085362



THE WALNUT TREE COMPANY

www.WalnutTrees.co.uk

Suppliers of quality walnut trees and reliable advice for forest, orchard, garden and amenity plantings

Walnut plant list 2009/10

TIMBER SELECTIONS: all supplied as one or two-year-old bare rooted seedlings

Hybrids:

Vigorous seedlings, 40+cm in height, selected for their suitability to Northern European growing conditions. Hybrids are significantly faster growing and more tolerant of a wider range of sites than seedlings of the pure species.

NG 23 hybrids (*Juglans nigra* x *J. regia*, Black x Common walnut hybrid):

Selected from a French breeding programme, these hybrid seedlings have both excellent vigour and form.

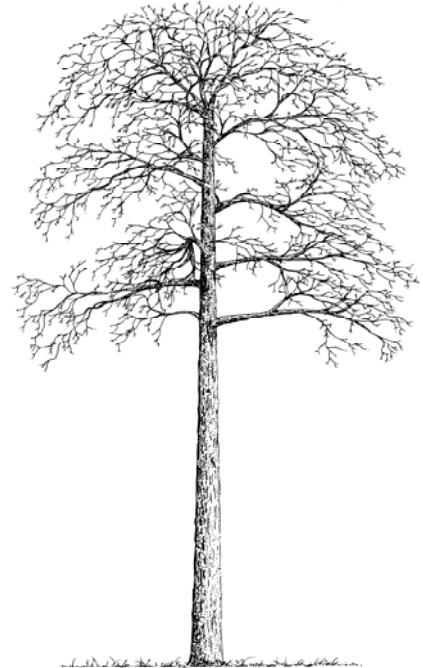
MJ209 hybrids (*J. major* x *J. regia*, Arizona x Common walnut hybrid):

Selected from a French breeding programme, these hybrid seedlings have excellent vigour and good form.

Pure species:

J. regia 'Lozeronne' seedlings – Common (English) walnut, native to Europe and Asia. Selected provenance of vigorous, late leafing seedlings with good form.

J. nigra seedlings – Black walnut, native to north-eastern USA.



The Walnut Tree Company Ltd. West Cottage, Flimwell, Wadhurst, Sussex TN5 7PX UK.

Tel: ++44 (0)1892 890376

 contactus@WalnutTrees.co.uk ~ Website: www.WalnutTrees.co.uk

Company No. 4085362